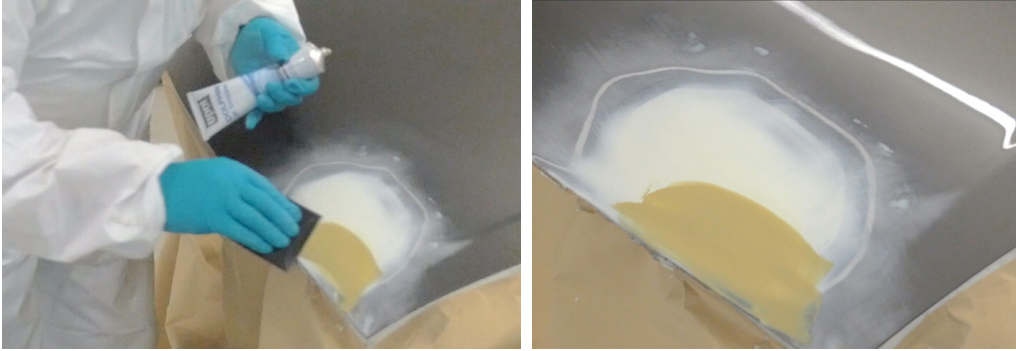


# DOLPHIN 1K COMBINATION PUTTY

Dolphin 1K Combination Putty is convenient and ready to use - no hardener required. Perfect for surface imperfections and pinholes, especially last minute situations.



## FEATURES AND BENEFITS

- Extra smooth acrylic putty with excellent adhesion
- Quick drying and easy to use
- Easy to sand
- Use straight from the tube - No hardener or mixing required!
- Excellent adhesion on all automotive substrates, including primer, prepared OEM paint surfaces, direct to bare metal, aluminum, galvanized, SMC, fiberglass, lightly abraded E-coat and most plastics.

## TECHNICAL DATA

Sanding: Dry 400-600	Apply with a metal or plastic applicator	Drying Time: 20 mins	Can be overpainted 1 hour after application Wet 600-800 Dry 400-600



Actual VOC as applied: 3.13 lbs/gal

## TARGET CUSTOMERS

- All body shop categories (A/MSO – D)

## BODYSHOP USER INSIGHTS

- 1K Combination Putties are typically viewed as distress purchases as they do not form a part of the planned repair process.
- 1K Combination Putties are used as a 'quick fix' for unnoticed fine surface imperfections before and after the application of a primer.
- 1K Combination Putties are not used in large quantities in a body shop. A typical repair will use about 3/16" to 3/8" "pea size" per application.
- A tube of 1K Combination Putty will typically last between 2 - 3 months within a body shop.<sup>1</sup>
- Product exposed to air will harden making it unusable. Smaller tube size minimizes product waste.

<sup>1</sup> Est. based on the market leaders' tube.

## KEY SELLING POINTS

- A smaller tube than the market leader offers less product waste.
- A better price means money savings over competitor products.
- Easy transport with tubes that are ergonomically designed for the painters pocket.
- Formulation is ultra fine and smooth compared to the competition.
- Excellent adhesion on multiple substrates, including aluminum and galvanized steel.



DRIVING SURFACE PERFECTION™